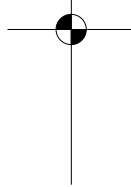
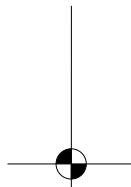
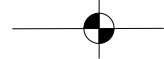
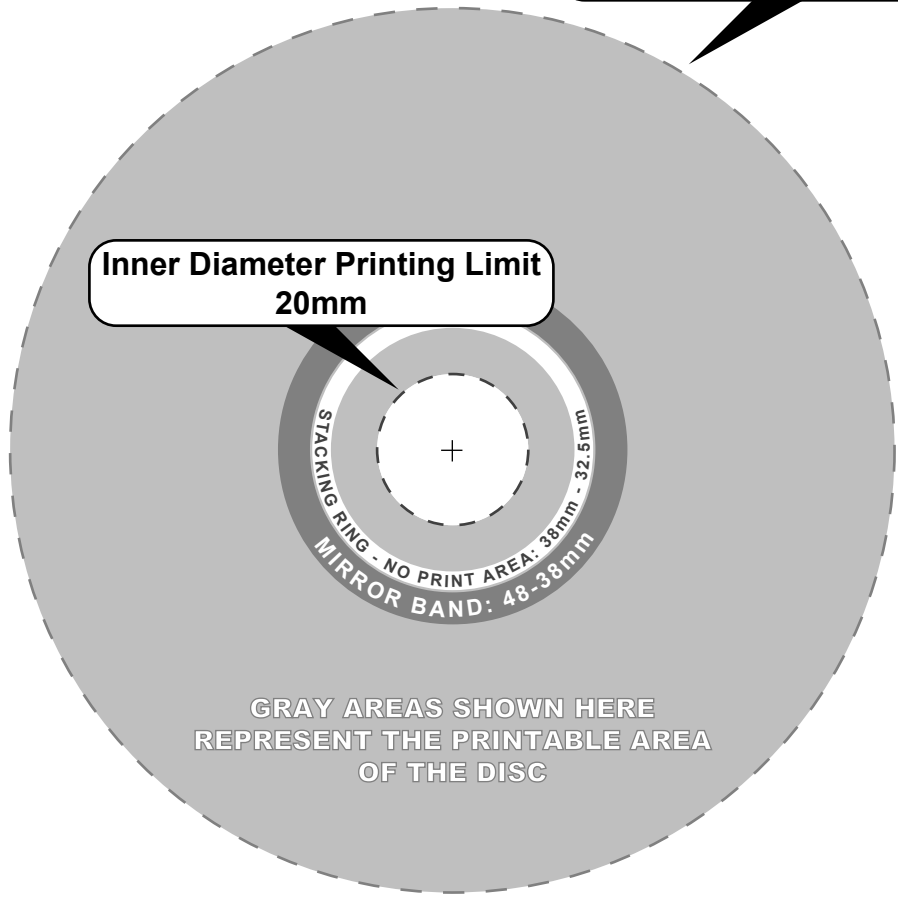
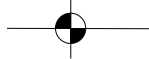


- NOTES:**
1. No solid type smaller than 5 point or type smaller than 6 point if knocking out from a solid color. No type smaller than 7 point is recommended for process CMYK imprints.
 2. No bleed is permitted or required beyond the outside diameter of 118mm or beyond the inside diameter of 20mm.
 3. Include all the font files used in the artwork, even if "common" as well as placed images.
 4. Only CMYK, mono-, duo-, tri- or quad-tones, gray scale or b/w line art should be used for placed images. Link rather than place your images if your application permits it. Place images can be 220 dpi to 300 dpi EPS, TIFF or DCS only.
 5. Colors look different when printed on the silver substrate of the disc. Some perceived color shift may occur. Colors are matched to the PMS numerical specification in your file - rely on a current Pantone SPOT COLOR swatch book (not a computer monitor) as a color reference.
 6. Attach a compositional proof to your electronic artwork.
 7. If supplying films, we require right-reading emulsion side up positives, 100 LPI, 1270-2540 dpi imagesetter resolution.
 8. Registration marks MUST appear on your film, and each color MUST be clearly marked. Remove all guides and comments that you don't wish to be printed on the finish product before submitting your art.
- PLEASE CALL YOUR CSR WITH QUESTIONS BEFORE SUBMITTING YOUR MATERIALS.

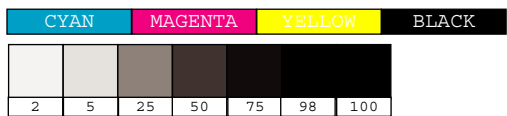


**Outer Diameter Printing Limit
117mm**

**Inner Diameter Printing Limit
20mm**



SELECTION #:	DATE:	TECH:	TOTAL NUMBER OF COLORS
LABEL:	FILE NAME:		
ARTIST:	PO #:		
TITLE:	JOB #:		
DATE REVISED:	SEPARATOR:		
CREATOR:			



PMS #1	PMS #2	PMS #3	PMS #4	PMS #5

List PMS colors in the order they will be printed on the disc.